



# Offering you the most comprehensive cancer services with integrity and sincerity

## Emmerson Oncology Unit

The Emmerson Oncology Unit is a 16-bed acute care area specializing in the treatment and care of cancer patients. We are well on our way to attaining our goal of having 100% of all eligible registered nurses obtaining both their National Certification and their Chemotherapy and Biotherapy Provider card by the Oncology Nursing Society. We continue to have outstanding patient satisfaction scores. This success is credited to the combined forces of the dedicated nursing staff, oncology nurse practitioner, social worker, case manager, palliative care team and physicians.

Dedicated Nurse Practitioner  
Emmerson Oncology Unit

The Emmerson Oncology Unit has a dedicated nurse practitioner, Anna Antonowich-Jonsson, RN, MSN, FNP, OCN. In this position she supports the physicians and the nursing staff in providing excellent care to the oncology patients and their families. Anna promotes involvement in the Oncology Nursing Society on both a local and national level as well as many volunteer programs.

## Outpatient Chemotherapy Department

Hospital based outpatient chemotherapy infusion has become standard of care for many patients. The outpatient chemotherapy department at Mercy opened as an answer to the needs of our community with five certified registered nurses and eight individual chemotherapy stations. The goal of this team is to deliver the highest level of quality compassionate care to each individual. The Center is open, Monday through Friday, from 8 am to 5 pm.



Angela Barnett BSN, OCN

## Large Bore CT Simulator

The benefit of the large bore over a traditional CT Simulator is the larger field of view for doctors and other clinical specialists, allowing patients to receive a more comprehensive scan. The CT Simulator is used with IMRT, stereotactic radiosurgery, HDR/MammoSite and 3D treatments. This equipment is just another way Mercy provides quality cancer care for the people of the North State.



Large Bore CT Simulator

## HDR (High Dose Rate)

Brachytherapy (HDR treatment) is used to treat early stage breast cancers as well as GYN, esophagus and bronchial cancers. Most HDR cases are performed in an outpatient setting. Due to a higher dose rate, treatments can be given in a reduced time frame, increasing a patient's quality of life while decreasing side effects.

## MammoSite

MammoSite, a form of partial breast irradiation, works by delivering radiation from inside the lumpectomy cavity directly to the tissue where cancer is most likely to reoccur. Radiation Therapy with MammoSite can be completed in five days rather than the usual six weeks. This allows patients to return to their normal routines sooner.

## IMRT

This advanced technology improves the accuracy and dose intensity of radiation delivery, avoiding unnecessary damage to healthy tissue. It also greatly reduces or even eliminates the complications and side effects of radiation therapy.

Dr. Sharon Pereira, Medical Director of Radiation Oncology, was awarded the 2006 Person of Distinction from Soroptomist International, acknowledging her efforts in the fight against cancer in Northern California.



## Mercy Regional Cancer Clinical Trials

The clinical trials program at Mercy Regional Cancer Center continues to expand. This year we are proud to be the number one accrual site for far Northern California. This accomplishment results from the tremendous effort by our Oncology Team and the physicians that support our program.

The newest clinical trial is the PACCT-1: TAILORx study. The TAILORx study is designed to find out if a new test (Oncotype DX) will be able to help doctors and their patients with early breast cancer make better treatment decisions. This study has been accruing data steadily since opening in November 2006. For a complete list of current and future studies see [www.mercy.org](http://www.mercy.org)

## Welcome New Team Member

Quiet Ncube, DABR certified medical physicist joins us to support department operations. Quiet also serves as the Radiation Safety Officer for Mercy Medical Center.

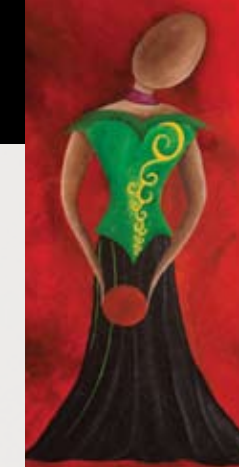
## Oncology Education

The Ninth Annual Oncology Nursing Conference was a success with over 100 attendees. The topics ranged from ethical and legal issues in end of life care to symptom management. The highlight of the conference was a performance by a singer/songwriter cancer survivor.

## Palliative Care Team

Palliative Care is specialized care that helps patients and families who are living with a serious illness. Team members facilitate patient-family-physician communication, demonstrate support for the patient's plan of care and discharge instructions, and offers assistance with pain and symptom management, particularly when symptom relief is hard to achieve due to the progressive nature of the illness or disease.

Beth Rhodes, MSW



## Floyd Morgan Family Cancer Resource Center

The Floyd Morgan Family Cancer Resource Center is a multimedia resource library and serves as the headquarters for many outreach programs. These programs include Expressions: an art event where anyone who has been touched by cancer can display their art, and Quit for Good: a tobacco cessation program geared to help people stop using all types of tobacco. Mercy sponsored seven, "Quit for Good" classes with an above average, one-year cessation rate.

## Oncology Nurse Liaison

Cancer patients embark on paths that are often winding and overwhelming. Our Oncology Nurse Liaison, Peggy Manning, R.N. helps patients with their journey by providing resources, answers and support. Charged with providing education to our community on prevention and early detection of all cancer Peggy staffs The Floyd Morgan Family Cancer Resource Center, offers multiple cancer screenings and facilitates community education sessions throughout the year.

## Programs & Support Services Contact Information

|   |  |  |
|---|--|--|
| Cancer Conference<br>For prospective or didactic cases,<br>We offer two conferences:<br>General<br>Breast   | Every Tuesday 12:30 pm<br>Every other Monday 12:30 pm  | 530-225-6149 or 530-225-6148   |
| Cancer Registry<br>Chemotherapy<br>Clinical Trials<br>Emmerson Oncology Unit<br>Floyd Morgan Family Cancer Resource Center<br>Hospice & Palliative Care<br>Hospitality House<br>Mercy Mt. Shasta Cancer Center<br>Radiation Oncology<br>Social Services & Support Programs<br>Spiritual Care Services | Cindy Clark or Linda Dole:<br>Shar Washburn:<br>Robin Lentz:<br>Judy Moore:<br>Peggy Manning:<br>Reception Desk:<br>Reservation Line:<br>Sharon Pannell:<br>Cancer Center:<br>Beth Rhodes:<br>Chaplain Office: | 530-225-6149 or 530-225-6148<br>530-225-6458<br>530-225-7471<br>530-225-7305<br>530-225-7479<br>530-245-4070<br>530-247-3441<br>530-926-7234<br>530-225-7450<br>530-225-7448<br>530-225-6285 |

## Complimentary Care

- Animal Assisted (pet) Therapy
- Art Therapy
- Massage Therapy
- Nutrition

Beverly Mundt, Radiation Oncology



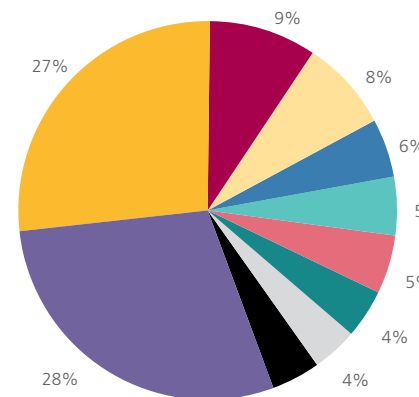


Think Pink morning, 2007

Mercy Regional Cancer Center Redding - CNEXT Site Table (sorted from most to least common)

| Group Code | Site Group                  | Total Cases | Sex: Male | Sex: Female |
|------------|-----------------------------|-------------|-----------|-------------|
|            | ALL SITES                   | 690         | 310       | 380         |
| 622        | LUNG/BRONCHUS-NON SM CELL   | 146         | 77        | 69          |
| 740        | BREAST                      | 134         | 0         | 134         |
| 850        | PROSTATE                    | 46          | 46        | 0           |
| 530        | COLON                       | 39          | 17        | 22          |
| 891        | KIDNEY AND RENAL PELVIS     | 28          | 20        | 8           |
| 962        | NON-HODGKIN'S LYMPHOMA      | 25          | 15        | 10          |
| 731        | MELANOMA OF SKIN            | 23          | 12        | 11          |
| 621        | LUNG/BRONCHUS-SMALL CELL    | 21          | 10        | 11          |
| 541        | RECTUM & RECTOSIGMOID       | 20          | 13        | 7           |
| 820        | CORPUS UTERI                | 19          | 0         | 19          |
| 910        | BRAIN                       | 15          | 8         | 7           |
| 570        | PANCREAS                    | 14          | 8         | 6           |
| 999        | UNKNOWN OR ILL-DEFINED      | 14          | 6         | 8           |
| 691        | LEUKEMIA                    | 13          | 3         | 10          |
| 880        | BLADDER                     | 13          | 12        | 1           |
| 930        | THYROID                     | 13          | 1         | 12          |
| 500        | ESOPHAGUS                   | 9           | 7         | 2           |
| 610        | LARYNX                      | 8           | 7         | 1           |
| 830        | OVARY                       | 8           | 0         | 8           |
| 920        | OTHER NERVOUS SYSTEM        | 8           | 2         | 6           |
| 692        | MYELOMA                     | 6           | 4         | 2           |
| 710        | SOFT TISSUE                 | 6           | 3         | 3           |
| 410        | TONGUE                      | 5           | 5         | 0           |
| 461        | TONSIL                      | 5           | 5         | 0           |
| 550        | LIVER                       | 5           | 4         | 1           |
| 860        | TESTIS                      | 5           | 5         | 0           |
| 510        | STOMACH                     | 4           | 3         | 1           |
| 542        | ANUS, ANAL CANAL, ANORECTUM | 4           | 2         | 2           |
| 699        | OTHER HEMATOPOIETIC         | 4           | 2         | 2           |
| 802        | CERVIX UTERI                | 4           | 0         | 4           |
| 842        | VULVA                       | 4           | 0         | 4           |
| 961        | HODGKIN'S DISEASE           | 4           | 2         | 2           |
| 440        | FLOOR OF MOUTH              | 3           | 1         | 2           |
| 470        | NASOPHARYNX                 | 2           | 1         | 1           |
| 480        | HYPOPHARYNX                 | 2           | 2         | 0           |
| 733        | OTHER SKIN CA               | 2           | 1         | 1           |
| 940        | OTHER ENDOCRINE             | 2           | 2         | 0           |
| 420        | SALIVARY GLANDS, MAJOR      | 1           | 0         | 1           |
| 561        | GALLBLADDER                 | 1           | 0         | 1           |
| 581        | RETROPERITONEUM             | 1           | 1         | 0           |
| 590        | OTHER DIGESTIVE             | 1           | 1         | 0           |
| 600        | NASAL CAVITY, SINUS, EAR    | 1           | 1         | 0           |
| 640        | PLEURA                      | 1           | 1         | 0           |
| 821        | UTERUS NOS                  | 1           | 0         | 1           |

### Top 10 Sites



- Lung/Bronchus - Non Sm Cell | 28%
- Breast | 27%
- Prostate | 9%
- Colon | 8%
- Kidney & Renal Pelvis | 6%
- Non-Hodgkin's Lymphoma | 5%
- Melanoma of Skin | 5%
- Lung/Bronchus - Sm Cell | 4%
- Rectum & Rectosigmoid | 4%
- Corpus Uteri | 4%

## Cancer Committee Members



Mercy Regional Cancer Center Cancer Committee

### Cancer Committee Non-Physician Members

Anna Antonowich-Jonsson, F.N.P.  
 Batina Balma, MSW  
 Beth Rhodes, MSW  
 Carlos Priestley, V.P. Operations  
 Carol Lake, American Cancer Society  
 Carolyn Helfenstein  
 Cindy Clark, CTR  
 Judy Moore, R.N.  
 Kathy Streich  
 Laurie Bish, R.N.  
 Linda Dole, CTR  
 Marilyn Thomas, R.N.  
 Melissa Hetzel  
 Peggy Manning, R.N.  
 Robin Lentz, CCRP  
 Sandy Downing, R.N.  
 Seth Overton, R.N.  
 Steve Buhler, MBA  
 Susan Cull, R.N.  
 Tamra O'Bryan, RHIA

### Cancer Committee Physician Members

Michael Figueroa, M.D. Chair  
 Sharon Pereira, M.D. Co-Chair  
 Amjad Rasheed, M.D.  
 Carolyn Collins, M.D.  
 Don Stanton, M.D.  
 Gregory Lomas, M.D.  
 Kyung "Chris" Kim, M.D.  
 Michael Cleary, M.D.  
 Sean Pitman, M.D.  
 Tryg Stratte M.D.  
 Tikoos Blankenberg, M.D.  
 Vicki Philben, M.D.



### Honorary Members

Rick Barnett, President  
 James De Soto, M.D., V.P., Medical Affairs  
 Midge Stafford, V.P. Patient Care Services



Shar Washburn, R.N., brings Mercy's Wall of Hope to Capital Hill



## Mercy Regional Cancer Center Annual Report



\*Reflects statistical data and reports collected July 1, 2005 to June 30, 2006

www.mercy.org | 1.800.90.MERCY



Michael Figueroa, M.D., Chair, Cancer Committee

### Chair Summary

Unfortunately, we live in a time when the value of a product is often based on its image as projected by the media rather than its true performance. Consequently, the average American is so inundated with watered down information that even the best and brightest find it difficult to separate falsehood from reality. That said, I invite you to review this year's annual report. Instead, you will not find watered down data and fluff. This report is just a small reflection of the ongoing efforts made here at Mercy Regional Cancer Center to bring the very best comprehensive program to our patients.

In June 2006 we celebrated 20 years as a nationally certified cancer center. As we celebrate this accomplishment Mercy Regional Cancer Center remains committed to continue offering the most comprehensive cancer services for the North State.

This year we lost a fellow physician and dear friend, Dr. James Campbell. Jim was one of the original-founding physicians of the Cancer Center. His dedication, hard work, and endurance help set the standards this Center is accountable to. On behalf of the Mercy Medical Center Cancer Committee we dedicate the 2007 Annual Report in memory of James Campbell, M.D.

Michael Figueroa, M.D.  
 Medical Director  
 Mercy Regional Cancer Center



Dr. Rick Boyd, Dr. Sharon Pereira, Dr. Michael Figueroa and Dr. John Clark at 20th celebration.